



# Product Catalogue

Data Collection Device Manufacturer and Solution Provider



[www.chainway.net](http://www.chainway.net)

# CHAINWAY

As a leading "Internet of Things" company in China, Shenzhen Chainway Information Technology Co., Ltd is a professional provider of products and solutions of RFID, barcode and biometrics technologies. We are dedicated to helping clients of all industries enhance efficiency, maximize productivity and reduce operational cost.



Handheld Computers



Handheld RFID Readers



Wearable RFID Reader



Fixed RFID Readers



Desktop RFID Reader



RFID Printer



UHF RFID Modules



Rugged Tablet



# Handheld Computers

MC50 / MC95 / C66 / C61 / C71 / C60 /  
C90 / C6000 / C70 / C75





## MC50 Handheld Computer

<b>Operating System</b>	Android 12
<b>CPU</b>	Qualcomm Snapdragon™ 480 2.0GHz Octa-core
<b>RAM+ROM</b>	4GB + 64GB
<b>Dimensions</b>	161.0 x 77.8 x 15.5mm
<b>Display</b>	6-inch Display
<b>Battery</b>	5000mAh Removable Main Battery Support QC3.0 and RTC, Built-in 100mAh Backup Battery
<b>Functions</b>	Barcode Scanning / NFC / Camera (some are optional)



## MC95 Handheld Computer

<b>Operating System</b>	Android 12
<b>CPU</b>	Cortex-A53 2.0GHz Octa-core
<b>RAM+ROM</b>	3GB + 32GB / 2GB + 16GB
<b>Dimensions</b>	160.0 x 75.0 x 16.4mm
<b>Display</b>	5.45-inch Display (1440 x 720)
<b>Battery</b>	5000mAh Removable Main Battery
<b>Functions</b>	Barcode Scanning / NFC / Camera (some are optional)





Fingerprint

Volume Measurement



## C66 Handheld Computer

<b>Operating System / CPU / RAM+ROM</b>	1) Android 11 Qualcomm Snapdragon™ 662 2.0GHz Octa-core 3GB + 32GB / 4GB + 64GB 2) Android 9 Qualcomm Snapdragon™ 450 1.8GHz Octa-core 3GB + 32GB / 4GB + 64GB
<b>Dimensions</b>	160.0 x 76.0 x 15.5 / 17.0mm
<b>Display</b>	5.5-inch IPS Display
<b>Battery</b>	4200mAh / 5200mAh Removable Main Battery; Support QC3.0 and RTC, Charging time: Only 2.5 Hours; 5200mAh Optional Pistol Battery
<b>Functions</b>	Barcode Scanning / UHF RFID / Fingerprint Recognition/ Volume Measurement / NFC / Camera (some are optional)

<b>Optional Accessories</b>	Pistol Grip / Vehicle Charge Cradle / Wrist Strap / Rubber Bumper / Screen Protector / Main Battery / Pistol Battery / Charging Cradle / Type C & Pogo Pin I/O Connector / 4-slots Charging Cradle Set / Rugged Rubber Boot with Hand Strap / Belt Clip
-----------------------------	--

<b>Fingerprint (Android 11)</b>	Accurate Fingerprint Reading, enables secure data encryption and fake finger detection 5200mAh Removable Main Battery Support Barcode Scanning and NFC
---------------------------------	---

<b>Volume Measurement (Android 11)</b>	Measurement Speed: up to 2s / piece, Measurement Error<5% Measured Distance: 40cm-4m 5200mAh Removable Main Battery Support Barcode Scanning and NFC
--	---



## C61 Handheld Computer

<b>Operating System / CPU / RAM+ROM</b>	1) Android 11, Qualcomm Snapdragon™ 662 2.0GHz Octa-core 3GB + 32GB / 4GB + 64GB 2) Android 9, Qualcomm Snapdragon™ 450 1.8GHz Octa-core 3GB + 32GB / 4GB + 64GB
<b>Dimensions</b>	202.0 x 72.5 x 32.0mm
<b>Keyboard</b>	27 keys / 37 keys / 47 keys
<b>Display</b>	4-inch Display (480 x 800)
<b>Battery</b>	6700mAh Removable Main Battery, support QC3.0 and RTC, Charging Time: Only 3 Hours Optional Trigger Handle (Extended 5200mAh Battery) Built in 100mAh Backup Battery, Supporting Battery Hot Swap
<b>Optional Accessories</b>	Pistol Grip, Wrist Strap, Rugged Rubber Boot with Hand Strap / Belt Clip Main Battery, Pistol Battery, Charging Cradle, 4-slots Charging Cradle Set
<b>Functions</b>	Barcode Scanning / UHF RFID / NFC / Camera (some are optional)
<b>Cold</b>	Operating Temp.: -30°C to +50°C



## C71 Handheld Computer

<b>Operating System / CPU / RAM+ROM</b>	1) Android 11, Cortex-A53 2.3GHz Octa-core 3GB + 32GB / 4GB + 64GB 2) Android 8.1, Cortex-A53 2.5GHz Octa-core 3GB + 32GB / 4GB + 64GB
<b>Dimensions</b>	164.2 x 78.8 x 17.0mm
<b>Display</b>	5.2-inch 1080p FHD Display
<b>Battery</b>	5000mAh Battery, Continuous use: over 12 hours, Charging time: only 3-4 hours
<b>Optional Accessories</b>	Charging Cradle / 4-slots Charging Cradle Set / Screen Protector / Rugged Rubber Boot
<b>Functions</b>	Barcode Scanning / Biometric Identification (Fingerprint / Iris / Face) / NFC / HF RFID / PSAM / Camera / Infrared Thermometer (some are optional)



## C60 Handheld Computer

<b>Operating System / CPU / RAM+ROM</b>	Android 11 Cortex-A53 2.0GHz Octa-core 3GB + 32GB / 4GB + 64GB
<b>Dimensions</b>	159.5 x 65.7 x 16.8mm
<b>Weight</b>	Only 219g
<b>Display</b>	4-inch (18:9), IPS LTPS 1080 x 540
<b>Battery</b>	4350mAh Removable Main Battery
<b>Optional Accessories</b>	Main Battery / Charging Cradle / Insert for Cradle / 4-slots Charging Cradle Set / Screen Protector / Rugged Rubber Boot with Hand Strap / Belt Clip
<b>Functions</b>	Barcode Scanning / UHF RFID / NFC / Front and Rear Camera (some are optional)



## C90 Handheld Computer

<b>Operating System / CPU / RAM+ROM</b>	Android 10 Cortex-A53 2.0GHz Octa-core 3GB + 32GB / 3GB + 64GB / 4GB +64GB
<b>Dimensions</b>	158,5 x 76.0 x 13.1mm
<b>Display</b>	5.7-inch IPS LTPS Display
<b>Battery</b>	5000mAh Battery Continuous Use: Over 12 Hours, Charging Time: Only 2.5 Hours
<b>WIFI</b>	2.4G / 5G Dual-band WIFI, 4G Network Bluetooth 5.0, BLE
<b>Optional Accessories</b>	Charging Cradle, Holster, Lanyard
<b>Functions</b>	Barcode Scanning / NFC / Front and Rear Camera (some are optional)



## C6000 Handheld Computer

<b>Operating System / CPU / RAM+ROM</b>	Android 10 Cortex-A53 2.0GHz Octa-core 3GB + 32GB
<b>Dimensions</b>	157.6 x 73.7 x 29.0mm
<b>Display</b>	4-inch Display (480 x 800)
<b>Sealing</b>	2m Drop Proof / IP65
<b>Battery</b>	4200mAh Removable Main Battery Continuous Use: over 12 Hours, Charging Time: only 3-4 Hours
<b>Optional Accessories</b>	Pistol / Battery / Charging Cradle / USB Cable / Wrist Strap / Holster / Rugged Rubber Boot
<b>Functions</b>	Barcode Scanning / NFC / Camera (some are optional)



## C70 Handheld Computer

<b>Operating System / CPU / RAM+ROM</b>	Android 11 Cortex-A53 2.3GHz Octa-core 3GB + 32GB / 4GB + 64GB
<b>Dimensions</b>	163.8 x 79.2 x 13.8mm
<b>Display</b>	5.2-inch 1080p FHD Display
<b>Sealing</b>	1.8m Drop / IP65/67
<b>Battery</b>	4000mAh Battery Continuous Use: over 12 hours, Charging Time: only 2-3 hours
<b>Optional Accessories</b>	Charging Cradle / Screen Protector Rugged Boot with Handstrap / Holster / Rugged Rubber Boot
<b>Functions</b>	Barcode Scanning / NFC / Iris Scanning / Camera / Infrared Thermometer (some are optional)



## C75 Handheld Computer with Printer

<b>Operating System / CPU / RAM+ROM</b>	Android 11 Cortex-A53 2.3 GHz Octa-core 3GB + 32GB / 4GB + 64GB
<b>Dimensions</b>	186.9 x 84.0 x 35.0-49.5mm
<b>Display</b>	5.2-inch 1080p FHD Display
<b>Battery</b>	8000mAh Battery
<b>Functions</b>	Thermal Printing / Barcode Scanning / NFC / PSAM / Camera (some are optional)



# RFID Products

Handheld / Wearable / Fixed / Desktop RFID Readers  
RFID Scanner / RFID Printer / RFID Reader&Writer / RFID Modules





## C5 Handheld RFID Reader

<b>Operating System / CPU / RAM+ROM</b>	Android 11 Cortex-A53 2.3GHz Octa-core 3GB + 32GB / 4GB + 64GB / 6GB + 128GB
<b>Display</b>	5-inch (Fingerprint), 1280 x 720 / 6-inch, 2400 x 1080
<b>Battery</b>	6700mAh / 13400mAh Removable Pistol Battery Built in 100mAh Backup Battery, Supporting Battery Hot Swap
<b>UHF RFID</b>	CM710-1 Module Based on Impinj E710 CM2000-1 Module Based on Impinj Indy R2000
<b>Other Functions</b>	Barcode Scanning / UHF RFID / NFC / Front and Rear Camera / Fingerprint Recognition (some are optional)



## C66 Handheld RFID Reader

<b>Operating System / CPU / RAM+ROM</b>	1) Android 11 Qualcomm Snapdragon™ 662 2.0GHz Octa-core 3GB + 32GB / 4GB + 64GB 2) Android 9 Qualcomm Snapdragon™ 450 1.8GHz Octa-core 3GB + 32GB / 4GB + 64GB
<b>Display</b>	5.5-inch IPS Display
<b>Battery</b>	4200mAh Removable Main Battery, Optional 5200mAh Pistol Battery, Support QC3.0 and RTC, Charging Time: Only 2.5 Hours
<b>UHF RFID</b>	CM710-1 Module Based on Impinj E710 CM2000-1 Module Based on Impinj Indy R2000 Max Read Range: 31m (depend on tags and environment)
<b>Other Functions</b>	Barcode Scanning / NFC / Camera (some are optional)



## C72 Handheld RFID Reader

<b>Operating System / CPU / RAM+ROM</b>	1) Android 11 Cortex-A53 2.3GHz Octa-core 3GB + 32GB / 4GB + 64GB 2) Android 8.1 Cortex-A53 2.5GHz Octa-core 3GB + 32GB / 4GB + 64GB
<b>Display</b>	5.2-inch 1080p FHD Display
<b>Battery</b>	8000mAh Battery
<b>UHF RFID</b>	CM710-1 Module Based on Impinj E710 CM2000-1 Module Based on Impinj Indy R2000 Max Read Range: 30m (depend on tags and environment)
<b>Other Functions</b>	Barcode Scanning / NFC / Camera (some are optional)



## C61 Handheld RFID Reader

<b>Operating System / CPU / RAM+ROM</b>	1) Android 11, Qualcomm Snapdragon™ 662 2.0GHz Octa-core 3GB + 32GB / 4GB + 64GB 2) Android 9, Qualcomm Snapdragon™ 450 1.8GHz Octa-core 3GB + 32GB / 4GB + 64GB
<b>Keyboard</b>	27 keys / 37 keys / 47 keys
<b>Display</b>	4-inch Display (480 x 800)
<b>Battery</b>	6700mAh Removable Main Battery Optional Trigger Handle (Extended 5200mAh Battery) Built in 100mAh Backup Battery, Supporting Battery Hot Swap Support QC3.0 and RTC, Charging Time: Only 3 Hours
<b>UHF RFID</b>	CM710-1 Module Based on Impinj E710 CM2000-1 Module Based on Impinj Indy R2000 Max Read Range: 30m (depend on tags and environment)
<b>Other Functions</b>	Barcode Scanning / NFC / Camera (some are optional)



## C66 Built-in RFID Reader

<b>Operating System / CPU / RAM+ROM</b>	Android 11 Qualcomm Snapdragon™ 662 2.0GHz Octa-core 3GB + 32GB / 4GB + 64GB
<b>Dimensions</b>	160.0 x 76.0 x 17.0mm
<b>Display</b>	5,5-inch IPS Display
<b>Battery</b>	5200mAh Removable Main Battery Support QC3.0 and RTC, Charging Time: Only 2.5 Hours
<b>UHF RFID</b>	CM-5N Module Based on Impinj E510 Max Read Range: 2.7m (depend on tags and environment)
<b>Other Functions</b>	Barcode Scanning / NFC / Camera (some are optional)



## C71 Built-in RFID Reader

<b>Operating System / CPU / RAM+ROM</b>	1) Android 11 Cortex-A53 2.3GHz Octa-core 3GB + 32GB / 4GB + 64GB 2) Android 8.1 Cortex-A53 2.5GHz Octa-core 3GB + 32GB / 4GB + 64GB
<b>Display</b>	5.2-inch 1080p FHD Display
<b>Battery</b>	5000mAh Battery Continuous Use: Over 12 Hours, Charging Time: Only 3-4 Hours
<b>UHF RFID</b>	CM-Q; CM-3N Module Based on Impinj E310 Max Read Range: 4m (depend on tags and environment)
<b>Other Functions</b>	Barcode Scanning / NFC / Camera (some are optional)





## R6 RFID Sled Reader

<b>SDK</b>	Support Android / iOS
<b>Battery</b>	5200mAh Battery
<b>WIFI</b>	Bluetooth 4.0, BLE
<b>UHF RFID</b>	CM710-1 Module Based on Impinj E710 CM2000-1 Module Based on Impinj Indy R2000 Max Read Range: 31m (depend on tags and environment)
<b>Other Functions</b>	Barcode Scanning (optional)



## R2 Bluetooth RFID Reader

<b>SDK</b>	Support Android / iOS
<b>Dimensions</b>	282.0 x 117.5 x 32.0mm
<b>Display</b>	1.77-inch Display, 128 x 160
<b>Battery</b>	5200mAh Battery
<b>Communication</b>	Bluetooth 4.0, BLE
<b>Storage</b>	50000 tags
<b>UHF RFID</b>	CM710-1 Module Based on Impinj E710 CM2000-1 Module Based on Impinj R2000 Max Read Range: 31m (depend on tags and environment)
<b>Other Functions</b>	Barcode Scanning (optional)



## SR160 RFID Scanner

<b>Sealing</b>	1.5m Drop Proof
<b>Bluetooth</b>	5.0 (Optional)
<b>UHF RFID</b>	CM-3N Module Based on Impinj E310 Read Range: 30cm
<b>Other Function</b>	Barcode Scanning



## R5 Wearable RFID Reader

<b>SDK</b>	Support Android / iOS
<b>Dimensions</b>	108.0 x 78.0 x 18.0mm
<b>Sealing</b>	IP65 / 1.2m Drop
<b>Battery</b>	2000mAh Removable Battery
<b>Communication</b>	Bluetooth 4.0, BLE / USB Type-C
<b>Optional Accessories</b>	Main Battery / Charging Cradle / Charging Cradle for Battery / Wrist strap / Arm Strap / Magnetic Handle
<b>UHF RFID</b>	CM710-1 Module Based on Impinj E710 CM2000-1 Module Based on Impinj Indy R2000 Max Read Range: 14m (depend on tags and environment)

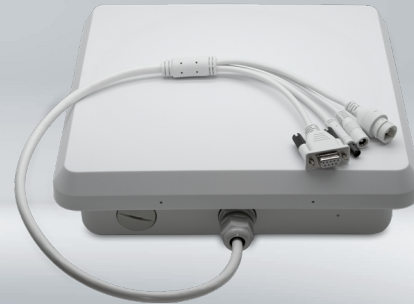
## MR20 Wearable RFID Reader

<b>Dimensions</b>	50.0 x 62.0 x 19.0mm
<b>Weight</b>	64g / 2.26oz. (with glove: 90g / 3.17oz.)
<b>Color</b>	Yellow, Blue, Gray
<b>Battery</b>	1200mAh Removable Battery
<b>Communication</b>	Bluetooth 5.0 / USB Type-C
<b>Optional Accessories</b>	Glove, Wristband, Lanyard, Charging Cradle for Battery
<b>UHF RFID</b>	CM-3N Module Based on Impinj E310 CM-5N Module Based on Impinj E510 CM-Q Read Range: 80cm (depend on tags and environment)



## U300 Fixed RFID Reader

<b>Operating System / CPU / RAM+ROM</b>	Android 11 Quad - Core 2.0GHz 2MB + 16MB
<b>Dimensions</b>	247.0 x 151.0 x 35.0mm
<b>Interface</b>	RS-232 RJ45 USB Host USB Device
<b>UHF RFID</b>	Based on Impinj E710 / Impinj Indy R2000



## UR1A Integrated RFID Reader

<b>Dimensions</b>	270.0 x 270.0 x 33.0mm
<b>Weight</b>	2230g / 78.66oz
<b>Interface</b>	RS - 232, RJ45, GPIO
<b>UHF RFID</b>	CM710-1 Based on Impinj E710 chip CM2000-1 Based on Impinj Indy R2000



### UR4 Fixed RFID Reader (4-Port)

<b>Dimensions</b>	102.8 x 102.8 x 28.0mm
<b>Interface</b>	RS-232, RJ45, GPIO
<b>Power</b>	DC (12V)
<b>UHF RFID</b>	CM710-4 Module Based on Impinj E710 CM2000-4 Module Based on Impinj Indy R2000



### URA4 Fixed Android RFID Reader (4-Port)

<b>Operating System / CPU / RAM+ROM</b>	Android 9 Qualcomm 1.8GHz Octa-core 2GB + 16GB / 3GB + 32GB
<b>Dimensions</b>	214.0 x 148.0 x 30.0mm
<b>Interface</b>	HDMI, RS-232, RJ45, USB 2.0 Type A, USB Type-C, USB Host, GPIO
<b>WIFI</b>	Support 4G / WIFI
<b>Power</b>	DC (12V) / POE / POE+
<b>UHF RFID</b>	CM710-4 Module Based on Impinj E710 CM2000-4 Module Based on Impinj Indy R2000



### UR8 Fixed Android RFID Reader (8-Port)

<b>Operating System / CPU / RAM+ROM</b>	Android 9 Qualcomm 1.8GHz Octa-core 2GB + 16GB / 3GB + 32GB / 4GB + 64GB
<b>Dimensions</b>	162.0 x 95.0 x 22.0mm
<b>Interface</b>	HDMI, RS-232, RJ45, USB 2.0 Type A, USB Host, GPIO
<b>WIFI</b>	Support 4G / WIFI
<b>POWER</b>	DC (12V) / POE / POE+
<b>UHF RFID</b>	CM710-8 Module Based on Impinj E710 CM2000-8 Module Based on Impinj Indy R2000





### R3 Desktop RFID Reader

<b>SDK</b>	Support Windows / Android / iOS
<b>Dimensions</b>	318.0 × 318.0 × 20.0mm
<b>Sealing</b>	IP65
<b>Communication</b>	Bluetooth 4.0, BLE, USB Type-C
<b>Power</b>	USB Type-C
<b>UHF RFID</b>	Read Range: 0 – 50cm



### R1 RFID Reader/Writer

<b>Dimensions</b>	117.0 × 117.0 × 25.0mm
<b>Weight</b>	170g / 6.0oz.
<b>UHF RFID</b>	CM310-1 Module Based on Impinj E310 Read Range: 15cm
<b>Other Function</b>	HF RFID
<b>PSAM</b>	Support



### CP30 RFID Printer

<b>Dimensions</b>	293.0 × 237.0 × 180.0mm
<b>RAM+Flash</b>	128MB + 256MB
<b>Display</b>	3.5" TFT Color Touch Panel LCD
<b>Printing Method</b>	Thermal transfer / Direct thermal
<b>Resolution</b>	203dpi / 300dpi
<b>Max. Printing Speed</b>	8ips (203dpi) / 6ips (300dpi)
<b>Interfaces</b>	Standard: USB, USB host, Ethernet Optional: Wi-Fi, Bluetooth

# UHF RFID Modules

- Based on Industry-leading Impinj E710 / E510/ E310 / Indy R2000 Chip
- Excellent Reading Performance
- Strong Stability and Monitoring System
- Superior Heat Dispersion Capacity
- Low Power Consumption
- Outstanding Consistency
- Easy Application Development



## Single Port RFID Module

57.2 x 36.8 x 7.6mm

CM710-1 (Impinj E710)  
CM510-1 (Impinj E510)  
CM310-1 (Impinj E310)  
CM2000-1 (Impinj Indy R2000)



## Single Port RFID Module

31.0 x 19.0 x 3.1mm

CM-7N (Impinj E710)  
CM-5N (Impinj E510)  
CM-3N (Impinj E310)



## Single Port RFID Module

26.0 x 22.0 x 3.2mm

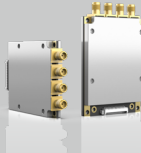
CM710-Nano (Impinj E710)  
CM510-Nano (Impinj E510)  
CM310-Nano (Impinj E310)



## 4-Port RFID Module

77.2 x 51.0 x 7.9mm

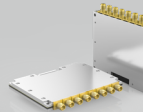
CM710-4 (Impinj E710)  
CM2000-4 (Impinj Indy R2000)



## 8-Port RFID Module

93.0 x 79.8 x 8.9mm

CM710-8 (Impinj E710)  
CM2000-8 (Impinj Indy R2000)



## 16-Port RFID Module

195.0 x 87.0 x 9.1mm

CM710-16 (Impinj E710)  
CM2000-16 (Impinj Indy R2000)



# P80 Rugged Tablet



<b>Operating System / CPU / RAM+ROM</b>	Android 9 Qualcomm 2.0GHz Octa-core 3GB + 32GB / 4GB + 64GB
<b>Dimensions</b>	250.8 x 152.0 x 15.0mm
<b>Display</b>	8-inch 1920 x 1200 IPS / 1280 x 800 IPS Display
<b>Battery</b>	8000mAh Battery
<b>Optional Accessories</b>	Pistol / Mounting Bracket / Wristband / Rugged Rubber Boot / Charging Cradle for Device / Insert for P80 Cradle Cup

## Optional Functions

<b>UHF RFID 1/2</b>	CM710-1 Module Based on Impinj E710 CM510-1 Module Based on Impinj E510 CM2000-1 Module Based on Impinj Indy R2000 Read Range: UHF 1: 10m ; UHF 2: 15m (depend on tags and environment)
<b>UHF RFID 3 (Built-in UHF)</b>	CM310-1 Module Based on Impinj E310 CM500-1 Module Based on Impinj Indy R500 Read Range: 30cm (depend on tags and environment)
<b>Biometric Identification</b>	Fingerprint / Face
<b>Other Functions</b>	Barcode Scanning / NFC / HF RFID / InfraRed / PSAM / Camera (some are optional)



[www.chainway.net](http://www.chainway.net)

**Shenzhen Chainway Information Technology Co., Ltd**

9F, Building2, Phase 2, Gaoxinqi Industrial Park, Liuxian 1st Rd., Bao'an District, Shenzhen, Guangdong 518102, China

Email: [sales@chainway.cn](mailto:sales@chainway.cn)